

Blue In Green

MUSIC BY MILES DAVIS
ARRANGED BY JAYAN NANDAGOPAN



Chamberlain Brass



THE CHAMBERLAIN BRASS SERIES

CHAMBERLAIN BRASS SERIES

BLUE IN GREEN

MUSIC BY MILES DAVIS
ARR BY JAYAN NANDAGOPAN

STRAIGHT ♩ = 60

Musical score for the first system of 'Blue in Green'. It features five staves: 1st Trumpet in Bb, 2nd Trumpet in Bb, Horn in F, Trombone, and Tuba. The key signature is Bb and the time signature is 4/4. The tempo is marked 'STRAIGHT ♩ = 60'. The 2nd Trumpet, Horn, and Trombone parts include a *mf* dynamic marking. The 2nd Trumpet and Tuba parts feature triplet markings. The 1st Trumpet part is mostly rests.

Musical score for the second system of 'Blue in Green', starting at measure 5. It features five staves: TPT., TPT., HN., TBN., and TBA. A box labeled 'A' is above measure 5. The key signature is Bb and the time signature is 4/4. The 2nd Trumpet, Horn, and Trombone parts include a *p* dynamic marking. The Tuba part includes a *mp* dynamic marking. The 2nd Trumpet and Tuba parts feature triplet markings. Chord symbols are written above the staves: Gm7, A7(#5), Dm7, Cm7, and F7. The instruction 'HARMON MUTE' is written above the 2nd Trumpet staff.

2

9 $B\flat$ maj7 $A7(\sharp 5)$ 3 $Dm7$ $E7(\sharp 9)$

TPT. $B\flat$ $B\flat$ $B\flat$ $B\flat$

TPT. $B\flat$ $B\flat$ $B\flat$ $B\flat$

HN. $B\flat$ $B\flat$ $B\flat$ $B\flat$

TBN. $B\flat$ $B\flat$ $B\flat$ $B\flat$

TBA. $B\flat$ $B\flat$ $B\flat$ $B\flat$

$B\flat$ maj7 $A7(\sharp 5)$ $Dm7$ $E7(\sharp 9)$

13 $Am7$ $Dm7$ $Gm7$

TPT. $B\flat$ $B\flat$ $B\flat$ $B\flat$

TPT. $B\flat$ $B\flat$ $B\flat$ $B\flat$

HN. $B\flat$ $B\flat$ $B\flat$ $B\flat$

TBN. $B\flat$ $B\flat$ $B\flat$ $B\flat$

TBA. $B\flat$ $B\flat$ $B\flat$ $B\flat$

$Am7$ $Dm7$ $Gm7$

16 **A7(#5)** **Dm7** **Cm7** **F7** **Bbmaj7** 3

TPT.

TPT.

HN.

TBN.

TBA. **A7(#5)** **Dm7** **Cm7** **F7** **Bbmaj7**

20 **A7(#5)** **Dm7** **E7(#9)** **Am7**

TPT.

TPT.

HN.

TBN.

TBA. **A7(#5)** **Dm7** **E7(#9)** **Am7**

4

24 Dm7

8 DOUBLE TIME SWING
Gm7

TPT.

TPT.

HN.

TBN.

TBA.

28

TPT.

TPT.

HN.

TBN.

TBA.

C A TEMPO STRAIGHT
Gm7

32

TPT. *p*

TPT. *p*

HN. *p*

TBN. *p*

TBA. *mp*

Bbmaj7 A7(#5) Dm7 E7(#9) Am7 Dm7 Gm7

36

TPT. *p*

TPT. *p*

HN. *p*

TBN. *p*

TBA. *mp*

A7(#5) Dm7 Cm7 F7

39 $B\flat$ maj7 $A7(\sharp 5)$ $Dm7$ $E7(\sharp 9)$

TPT. $B\flat$ 4/4 3 3 3

TPT. $B\flat$ 4/4 3

HN. $B\flat$ 4/4 3

TBN. $B\flat$ 4/4 3

TBA. $B\flat$ 4/4 3

$B\flat$ maj7 $A7(\sharp 5)$ $Dm7$ $E7(\sharp 9)$

43 $Am7$ $Dm7$ $Gm7$ $A7(\sharp 5)$

TPT. $B\flat$ 4/4 5 3

TPT. $B\flat$ 4/4 3

HN. $B\flat$ 4/4 3

TBN. $B\flat$ 4/4 3

TBA. $B\flat$ 4/4 3

$Am7$ $Dm7$ $Gm7$ $A7(\sharp 5)$

47 *Dm7* *Cm7* *F7* *Bbmaj7* 7

TPT. *Dm7* *Cm7* *F7* *Bbmaj7*

TPT.

HN.

TBN.

TBA. *Dm7* *Cm7* *F7* *Bbmaj7*

50 *A7(#5)* *Dm7*

TPT. *A7(#5)* *Dm7*

TPT.

HN.

TBN.

TBA. *A7(#5)* *Dm7*

52 E7(#9) RIT. Am⁹

TPT. *E7(#9) RIT.* 3

TPT.

HN.

TBN. *E7(#9)*

TBA. *Am⁹*

1ST TRUMPET IN B♭

CHAMBERLAIN BRASS SERIES

BLUE IN GREEN

MUSIC BY MILES DAVIS
ARR BY JAYAN NANDAGOPAN

STRAIGHT ♩ = 60

4

5 **A** Gm7 HARMON MUTE A7(♯5) Dm7 Cm7 F7 Bbmaj7

10 A7(♯5) 3 Dm7 E7(♯9) Am7 Dm7

15 Gm7 A7(♯5) Dm7 Cm7 F7 Bbmaj7

20 A7(♯5) Dm7 E7(♯9) Am7 Dm7

25 **B** DOUBLE TIME SWING Gm7 7

34

35 **C** A TEMPO STRAIGHT

35 *Gm7* *A7(#5)* *Dm7* *Cm7* *F7*

39 *B♭maj7* *A7(#5)* *Dm7* *E7(#9)*

39 *B♭maj7* *A7(#5)* *Dm7* *E7(#9)*

43 *Am7* *Dm7* *Gm7* *A7(#5)*

43 *Am7* *Dm7* *Gm7* *A7(#5)*

47 *Dm7* *Cm7* *F7* *B♭maj7*

47 *Dm7* *Cm7* *F7* *B♭maj7*

50 *A7(#5)* *Dm7* *E7(#9)* *Am9*

50 *A7(#5)* *Dm7* *E7(#9)* *Am9*
RIT.

2ND TRUMPET IN B♭

BLUE IN GREEN

MUSIC BY MILES DAVIS
ARR BY JAYAN NANDAGOPAN

STRAIGHT ♩ = 60

5 **A** *mf*

11

17

23 **B** DOUBLE TIME SWING *mf*

28

33 **C** A TEMPO STRAIGHT *p*

39

45

49

RIT.

HORN IN F

CHAMBERLAIN BRASS SERIES

BLUE IN GREEN

MUSIC BY MILES DAVIS
ARR BY JAYAN NANDAGOPAN

STRAIGHT ♩ = 60

5 **A**

12

18

24

B DOUBLE TIME SWING

29

34

C A TEMPO STRAIGHT

41

47

RIT.

TROMBONE

CHAMBERLAIN BRASS SERIES

BLUE IN GREEN

MUSIC BY MILES DAVIS
ARR BY JAYAN NANDAGOPAN

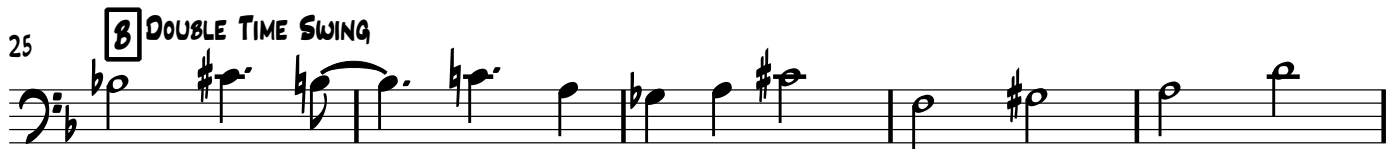
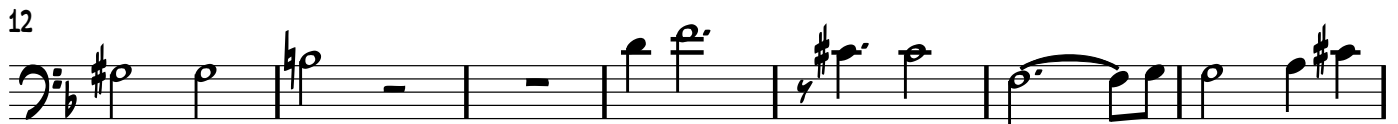
STRAIGHT ♩ = 60



mf



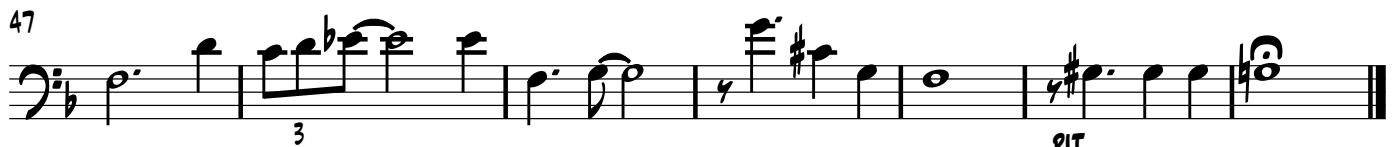
p



mp



p



RIT.

TUBA

CHAMBERLAIN BRASS SERIES

BLUE IN GREEN

MUSIC BY MILES DAVIS
ARR BY JAYAN NANDAGOPAN

STRAIGHT ♩ = 60

5 **A** Gm7 3 A7(♯5) 3 Dm7 3 Cm7 F7 B♭maj7

10 A7(♯5) Dm7 E7(♯9) Am7 Dm7

15 Gm7 3 A7(♯5) 3 Dm7 Cm7 F7

19 B♭maj7 A7(♯5) Dm7 E7(♯9) Am7 Dm7

25 **B** DOUBLE TIME SWING Gm7 A7(♯5) Dm7 Cm7 F7 B♭maj7 A7(♯5) Dm7 E7(♯9)

29 Am7 Dm7 Gm7 A7(♯5) Dm7 Cm7 3 B♭maj7 A7(♯5) Dm7 E7(♯9)

v.s.

34 Am⁷ Dm⁷ **C** A TEMPO STRAIGHT
Gm⁷ A7(♯5) Dm⁷ Cm⁷ F7 B♭maj7

40 A7(♯5) Dm⁷ E7(♯9) Am⁷ Dm⁷ Gm⁷ A7(♯5)

47 Dm⁷ Cm⁷ F7 B♭maj7

50 A7(♯5) Dm⁷ E7(♯9) Am⁹
RIT.